



ALABAMA DEPARTMENT OF
Early Childhood
Education

First Teacher: Alabama's Home Visiting Program

An introduction to First Teacher

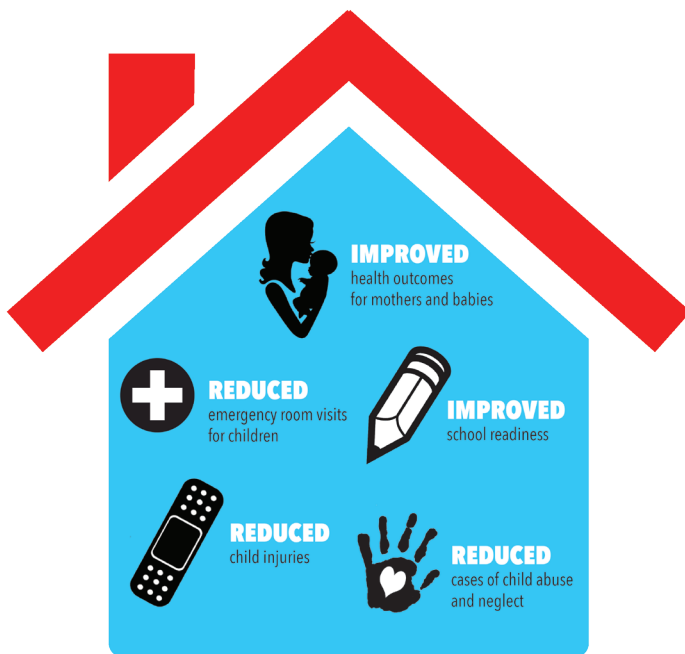
The Department of Early Childhood Education (DECE) is **Alabama's designated lead agency for home visiting**, aligning it with the department's other early childhood system initiatives.

DECE's Office of Early Learning and Family Support provides grant funding for voluntary home visiting programs that focus on school readiness and family and child health and well-being as well as help families access resources in their communities. All DECE-funded programs **use an evidence-based home visiting model** that matches families with trained professionals to provide information and support. Programs may enroll pregnant women and continue to serve the family until the child enters kindergarten. While services may be received elsewhere, the home is the primary setting for service delivery.

First Teacher availability and gaps

Home visiting programs **serve families in 53 counties** across Alabama. Currently, **14 counties – Autauga, Choctaw, Covington, Crenshaw, Etowah, Fayette, Jackson, Lauderdale, Lawrence, Lee, Limestone, Pike, St. Clair, and Washington – do not have home visiting services**. Because of limited financial resources, even counties offering home visiting services may have families on waiting lists.

First Teacher program delivers results



A **\$3 million incremental increase** in state funds would **allow DECE to add programs** to initiate home visiting services for families in the counties that are currently unserved and underserved.