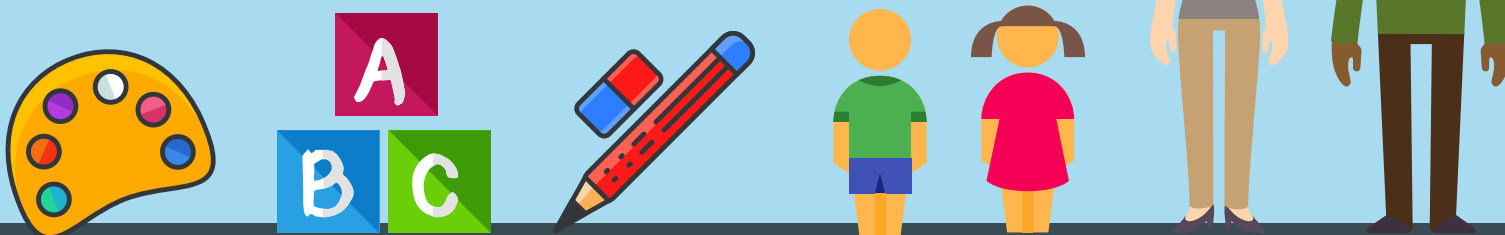


EHS-CCP

Early Head Start Child Care Partnership



The Department of Early Childhood Education (DECE) and the Department of Human Resources (DHR) have created an interagency agreement to support the educational requirements from the Head Start Performance Standards (Sub-Part C). DECE supports programs, classrooms, and teachers in building developmentally appropriate learning environments and educational experiences for children birth to 3 years of age. The EHS-CCP Project is composed of six Program Partners that join with 32 Family/Group Homes and 44 center-based classrooms to serve 566 children throughout the state of Alabama.

How We Support:

- Strength-Based Collaboration
- Promoting mental health and providing access to resources
- Individualized Support For Each Teacher & Reflective Feedback
- Encouraging Teacher-Led Action Plans
- Support in Achieving Goals
- Strengthening Quality of Educational Services

DECE Support RESOURCES!!

- Building Individualized educational opportunities for each child
- Classroom Support
- Conscious Discipline
- Coaching for teachers
- e-Learning Opportunities
- Professional Development

